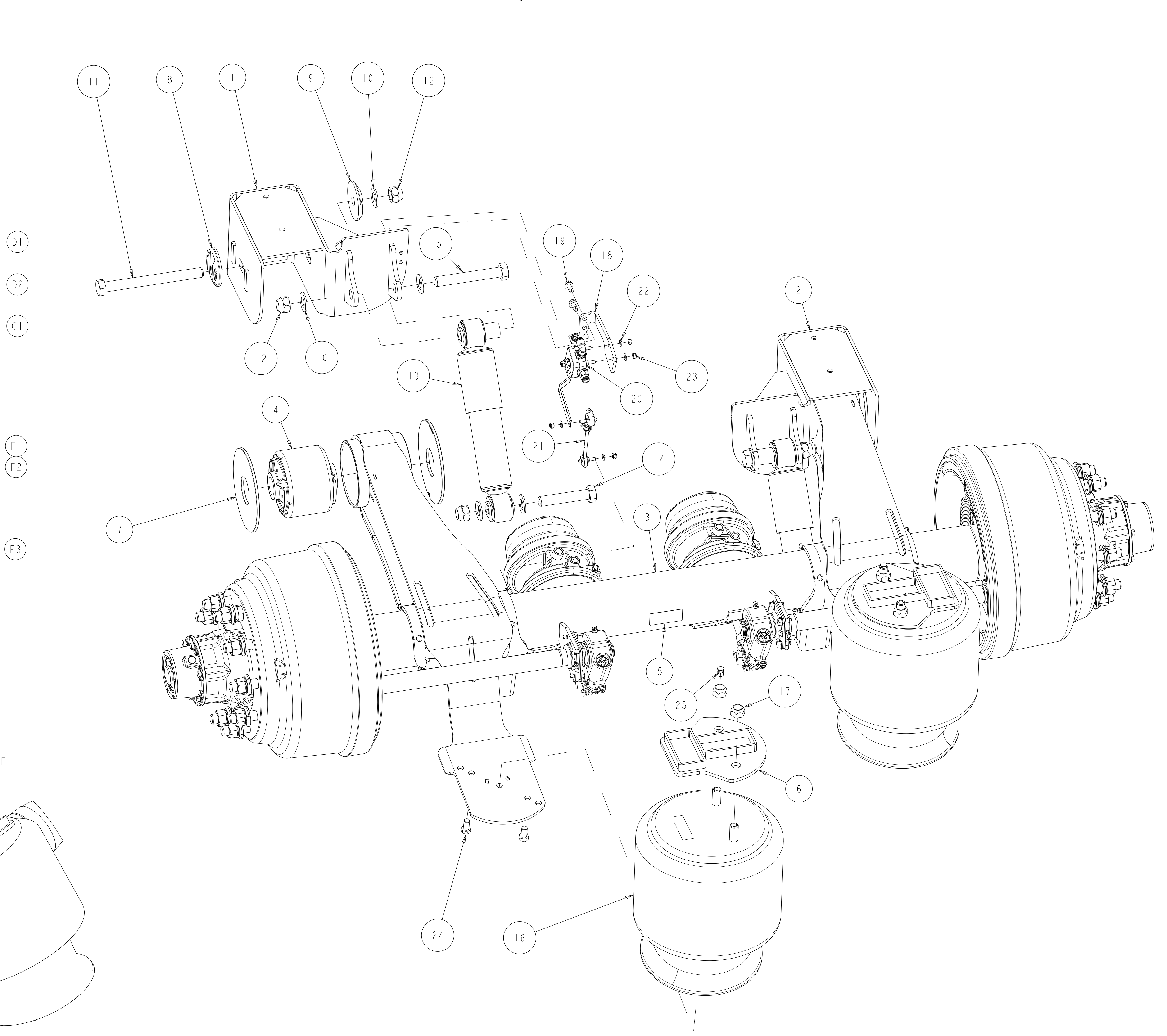


Revision: F.8

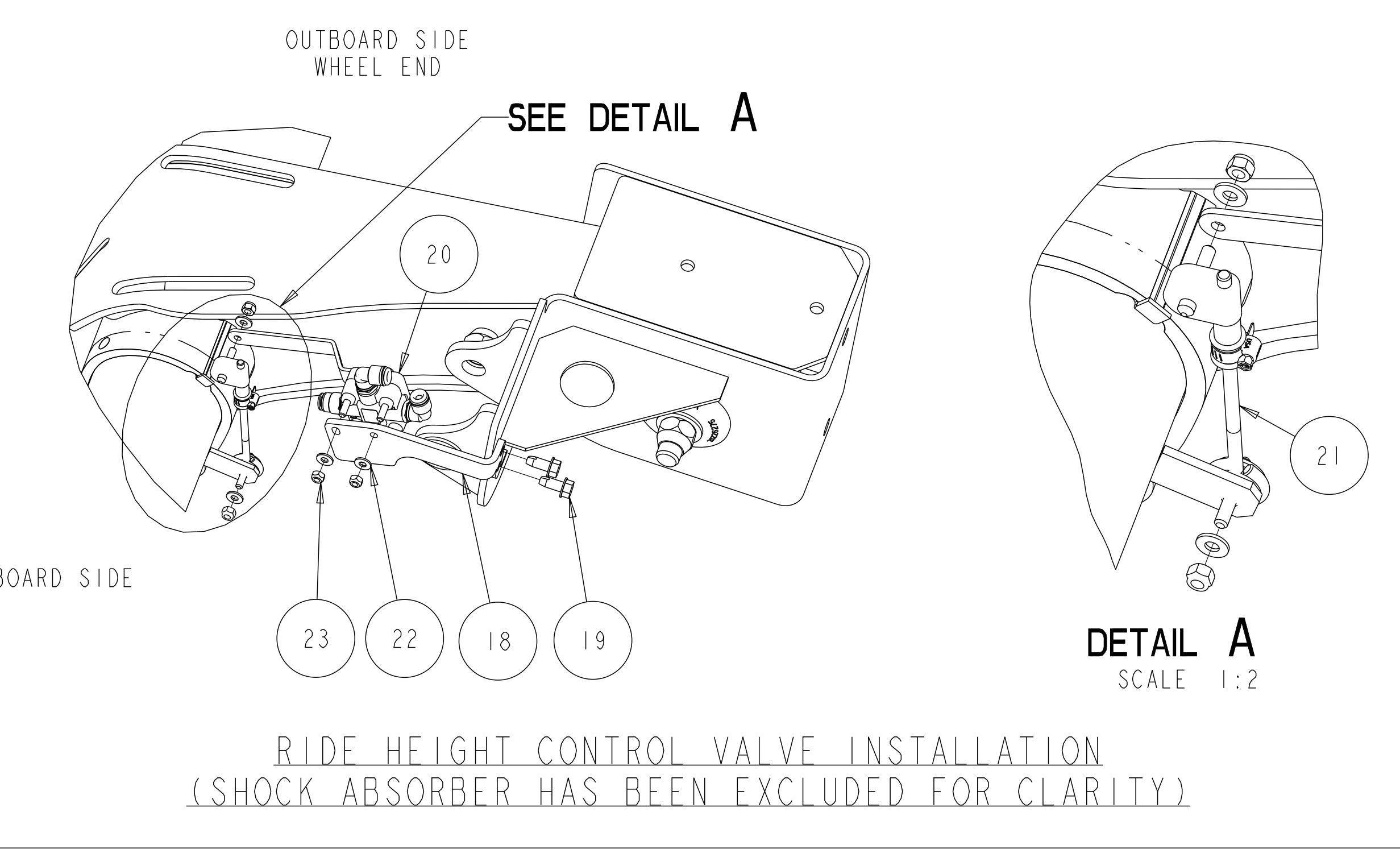
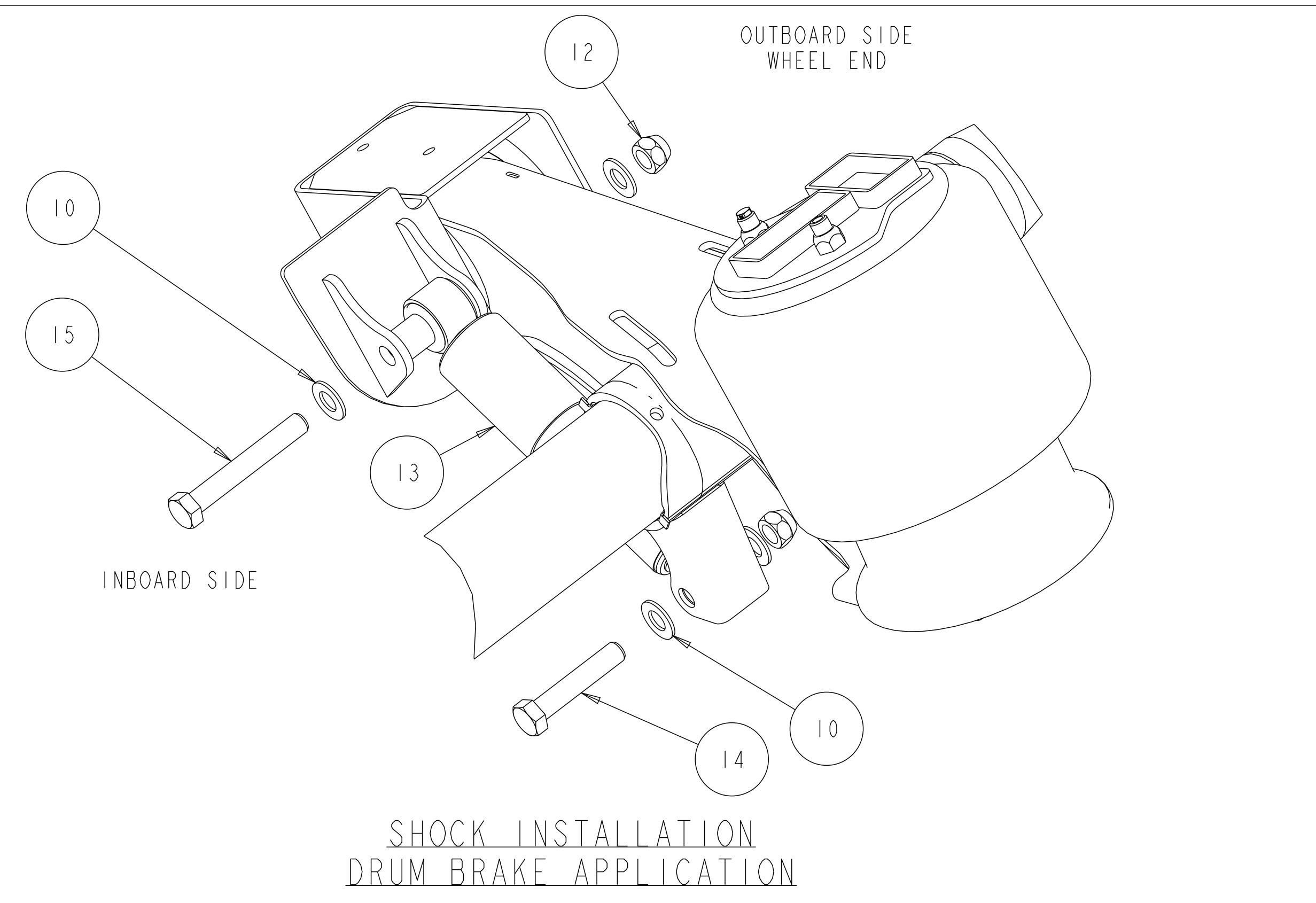
STATE: Engineering Released

EXPORT_CONTROL: HARD_WARE=EAR - EAR99,EXPORT_CONTROL=EAR - EAR99

ITEM #	PART NAME	PART NUMBER	QTY.
-	LAYOUT-MTA23L/25L/30L TRAILER (E)	5-67937K_01	1
1	FRAME BRKT ASSY	SEE BILL OF MATERIAL	1
2	FRAME BRKT ASSY	SEE BILL OF MATERIAL	1
3	AXLE ASSY - TRAILER	SEE BILL OF MATERIAL	1
4	PIVOT BUSH MOULDING	A-1225C1537	2
5	NAME PLATE	2297-T-8652	1
6	PEDESTAL-AIR SPRING	SEE BILL OF MATERIAL	2
7	WEAR WASHER	21226663	4
8	WASHER ECCENTRIC	21226276	2
9	WASHER SPECIAL	21226275	2
10	WASHER-HARDENED	122905295	10
11	SCREW-CAP (.875-9 UNC X 9)	S-21472-M-2	2
12	NUT (PREVAILING TORQUE)	1227X1766	6
13	ABSORBER-SHOCK	A-7805-S-1163	2
14	SCREW-CAP (.875-9 UNC X 4.5)	S-214362-2	2
15	SCREW-CAP (.875-9 UNC X 6)	S-214482-2	2
16	SPRING-AIR	SEE BILL OF MATERIAL	2
17	NUT-LOCK,FIN	1227-M-1573	4
18	BRKT,FIN	SEE BILL OF MATERIAL	1
19	SCREW-SELF TAPPING	10-X-1348	2
20	VALVE-HEIGHT CONTROL	SEE BILL OF MATERIAL	1
21	LINKAGE-HEIGHT CONTROL	A-1245X1220	1
22	WASHER-FLAT	WA-34	2
23	NUT-LOCK,FIN.	NL-24-M-1	2
24	SCREW	S 288Z 2	4
25	PLUG	1250H1308	2



SIM. PARTS			
REVISIONS			
A	RELEASED 5-67937K_01 FOR PRODUCTION.	118911 15-Jun-12	LGS SJP
B	UPDATED VIEWS TO SHOW LATEST RELEASED SUSPENSION COMPONENTS. 1-LINKAGE-HEIGHT CONTROL PART NUMBER WAS 203159-5.	119718 17-Sep-12	LGS SVM
C	UPDATED 5-67937K_01 LAYOUT TO REFLECT THE CHANGES IN SHOCK ABSORBER BRACKET. 1-ITEM #14 WAS S-214402-2	124403 07-Jul-14	KKH SD
D	D1- 122905295 WAS 200259-6 D2- 1227X1766 WAS 1227R1604	ECN-137447 02-07-17	JMK VL
E	ADDED MTA23L INFO.	ECN-143200 04-Oct-17	LGS SKS
F	1-ITEM #20 UPDATED RHCV REPRESENTATION 2-ITEM #21 PN WAS 203159-5 3-ADDED ITEM #25 AS PLUG 1250H1308 WITH 02 QTY.	ECN-167907 15-JUN-20	VMJ SD



CAD FILES		
FILE NAME	REV.	VER
DRAWING 5-67937K	F.7	
ASSEM 5-67937K	F.7	

DO NOT CHANGE MANUALLY

(E)
**MTA23L/25L/30L
WITH DRUM BRAKE**

117163	PART/DWG NO. 5-67937K_01	EDC 11707																
RELEASE	NAME LAYOUT-MTA23L/25L/30L TRAILER	PAGE 1 OF 1																
<table border="1"> <tr> <th>APPROVED</th> <th>DRAWN BY</th> <th>CHECKED BY</th> <th>3RD ANGLE PROJECTION</th> </tr> <tr> <td>L.G.S.</td> <td>S.J.P. 11-Jun-12</td> <td>L.G.S. 11-Jun-12</td> <td></td> </tr> </table>		APPROVED	DRAWN BY	CHECKED BY	3RD ANGLE PROJECTION	L.G.S.	S.J.P. 11-Jun-12	L.G.S. 11-Jun-12		<table border="1"> <tr> <th>DRAWING SIZE</th> <th>DESIGN CONTROL GROUP</th> <th>PART NO.</th> </tr> <tr> <td>E</td> <td>W W TRAILER PRODUCTS</td> <td></td> </tr> </table>	DRAWING SIZE	DESIGN CONTROL GROUP	PART NO.	E	W W TRAILER PRODUCTS			
APPROVED	DRAWN BY	CHECKED BY	3RD ANGLE PROJECTION															
L.G.S.	S.J.P. 11-Jun-12	L.G.S. 11-Jun-12																
DRAWING SIZE	DESIGN CONTROL GROUP	PART NO.																
E	W W TRAILER PRODUCTS																	
<table border="1"> <tr> <th>PROJ. ENG.</th> <th>MATERIAL</th> <th>SPECIAL</th> </tr> <tr> <td>L.G.S.</td> <td></td> <td></td> </tr> </table>		PROJ. ENG.	MATERIAL	SPECIAL	L.G.S.			<table border="1"> <tr> <th>SCALE</th> <th>INQUIRY NO.</th> <th>C.R./T.E. NO.</th> <th>APP. NO.</th> </tr> <tr> <td>1:4</td> <td></td> <td></td> <td>PCCR 119179 / 119183</td> </tr> </table>	SCALE	INQUIRY NO.	C.R./T.E. NO.	APP. NO.	1:4			PCCR 119179 / 119183		
PROJ. ENG.	MATERIAL	SPECIAL																
L.G.S.																		
SCALE	INQUIRY NO.	C.R./T.E. NO.	APP. NO.															
1:4			PCCR 119179 / 119183															
<table border="1"> <tr> <th>APPLY SPECIFIED MERITOR MARKINGS PER DRAFTING ENGINEERING STANDARDS D-004</th> <th>THIS PRINT IS LOANED ON A CONFIDENTIAL BASIS SUBJECT TO RETURN UPON DEMAND BY MERITOR AND NOTHING HEREON MAY BE REPRODUCED, USED OR DISCLOSED IN WHOLE OR IN PART WITHOUT THE PRIOR WRITTEN PERMISSION OF MERITOR.</th> <th>MATERIAL</th> <th>PROCESS</th> </tr> <tr> <td></td> <td></td> <td></td> <td></td> </tr> </table>		APPLY SPECIFIED MERITOR MARKINGS PER DRAFTING ENGINEERING STANDARDS D-004	THIS PRINT IS LOANED ON A CONFIDENTIAL BASIS SUBJECT TO RETURN UPON DEMAND BY MERITOR AND NOTHING HEREON MAY BE REPRODUCED, USED OR DISCLOSED IN WHOLE OR IN PART WITHOUT THE PRIOR WRITTEN PERMISSION OF MERITOR.	MATERIAL	PROCESS					<table border="1"> <tr> <th>ORIGINAL FOR</th> <th>SCALE</th> <th>DESIGN CONTROL GROUP</th> <th>PART NO.</th> </tr> <tr> <td>MTA 23L/25L/30L</td> <td>1:4</td> <td>W W TRAILER PRODUCTS</td> <td></td> </tr> </table>	ORIGINAL FOR	SCALE	DESIGN CONTROL GROUP	PART NO.	MTA 23L/25L/30L	1:4	W W TRAILER PRODUCTS	
APPLY SPECIFIED MERITOR MARKINGS PER DRAFTING ENGINEERING STANDARDS D-004	THIS PRINT IS LOANED ON A CONFIDENTIAL BASIS SUBJECT TO RETURN UPON DEMAND BY MERITOR AND NOTHING HEREON MAY BE REPRODUCED, USED OR DISCLOSED IN WHOLE OR IN PART WITHOUT THE PRIOR WRITTEN PERMISSION OF MERITOR.	MATERIAL	PROCESS															
ORIGINAL FOR	SCALE	DESIGN CONTROL GROUP	PART NO.															
MTA 23L/25L/30L	1:4	W W TRAILER PRODUCTS																