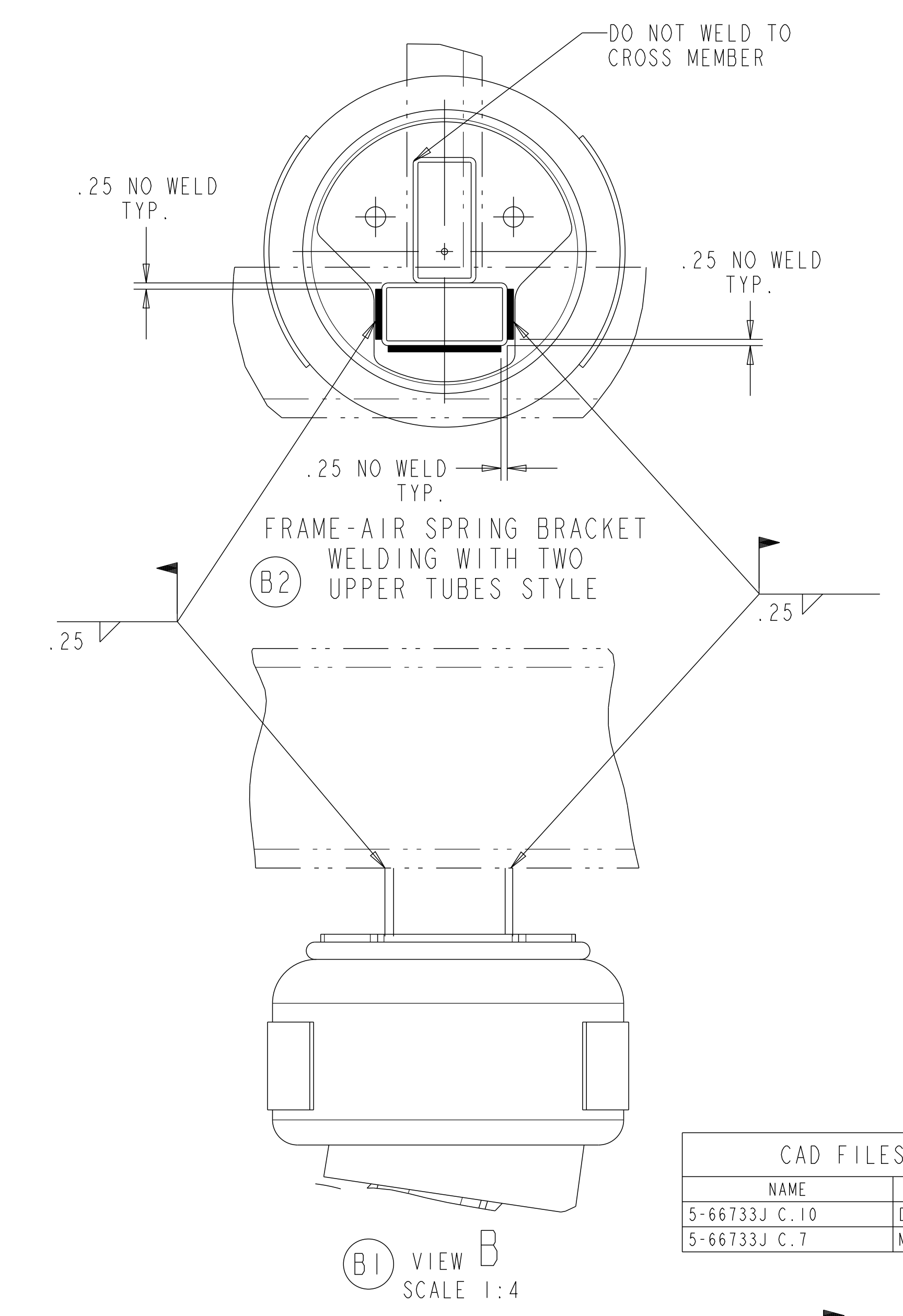
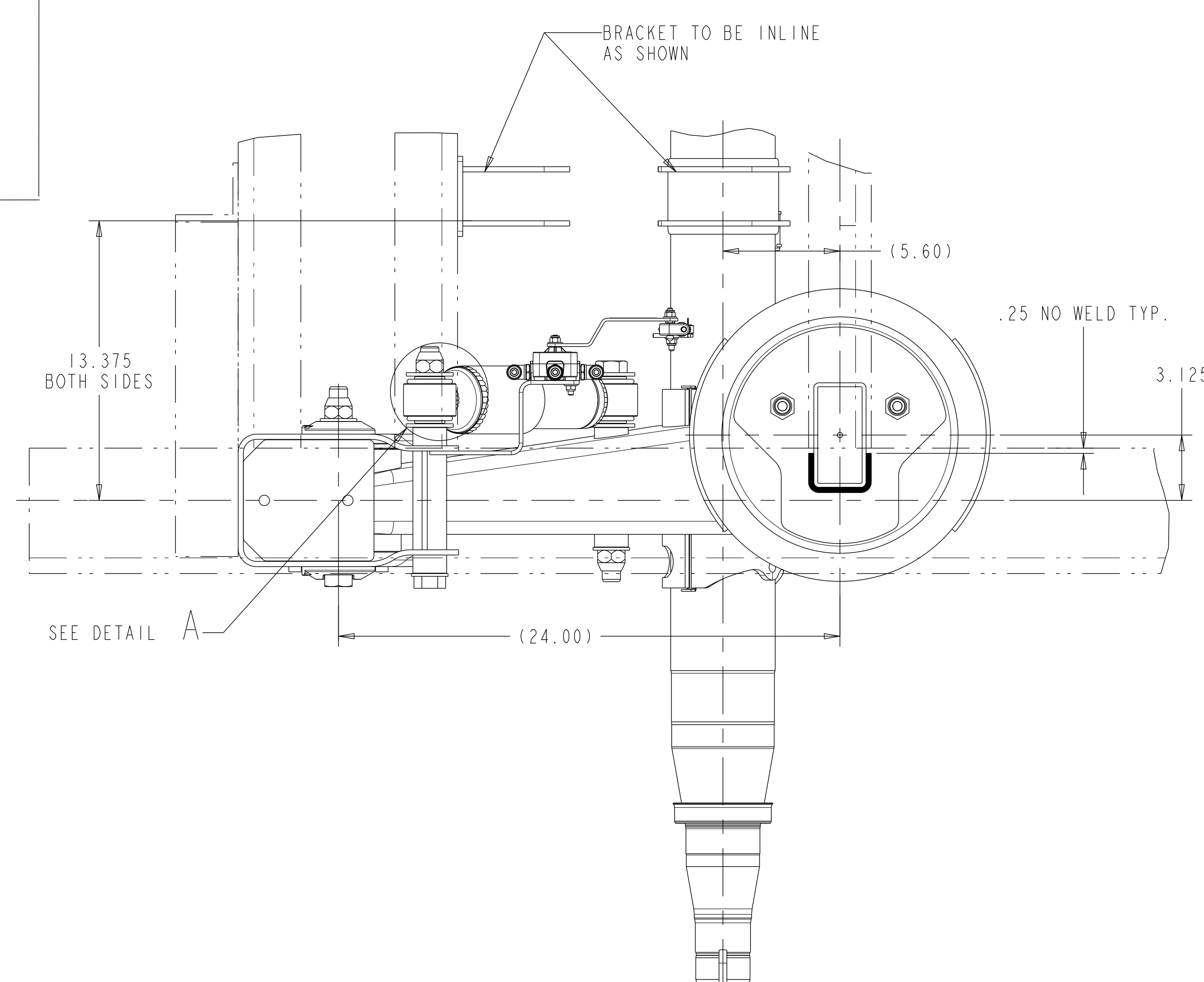
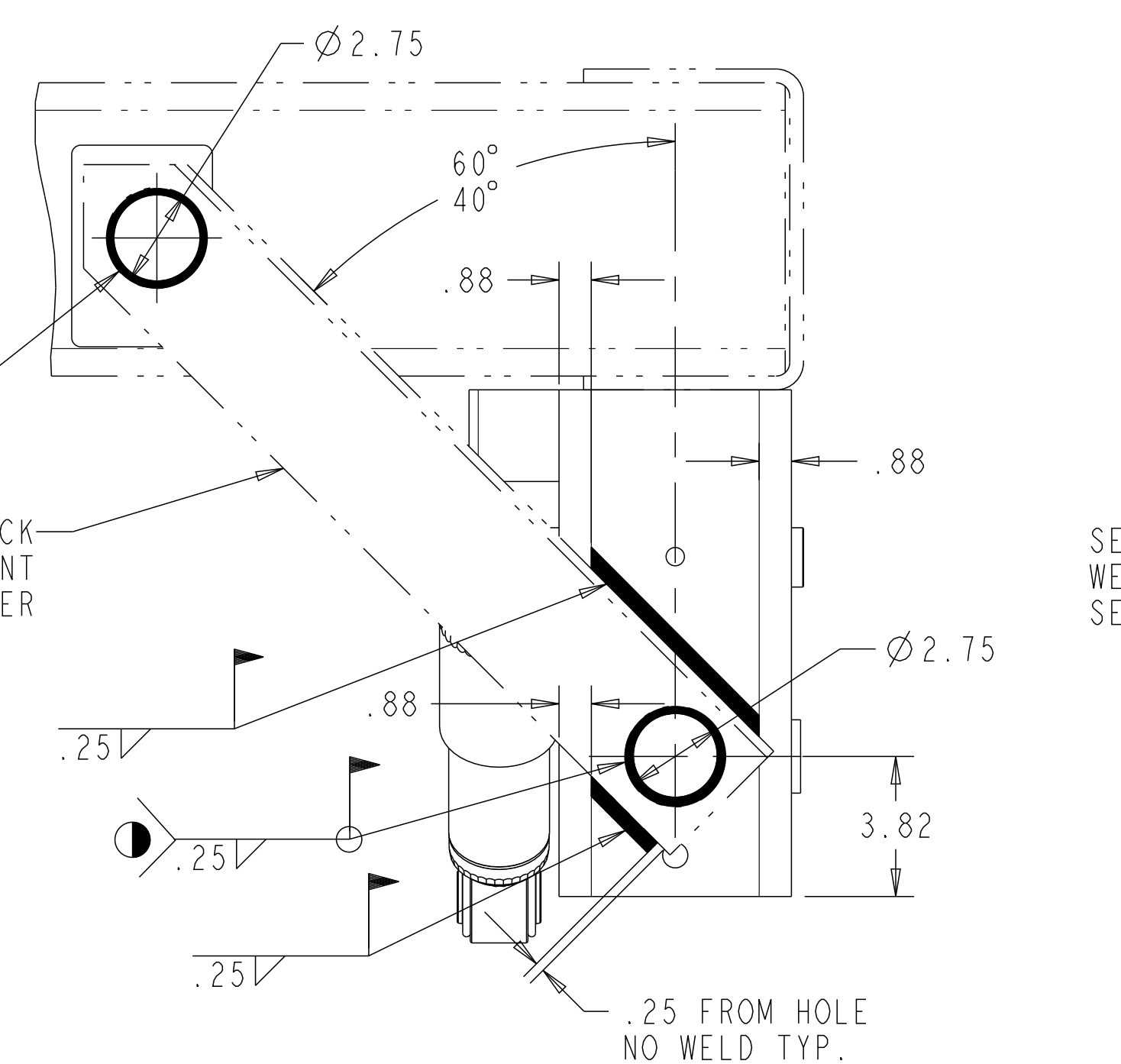
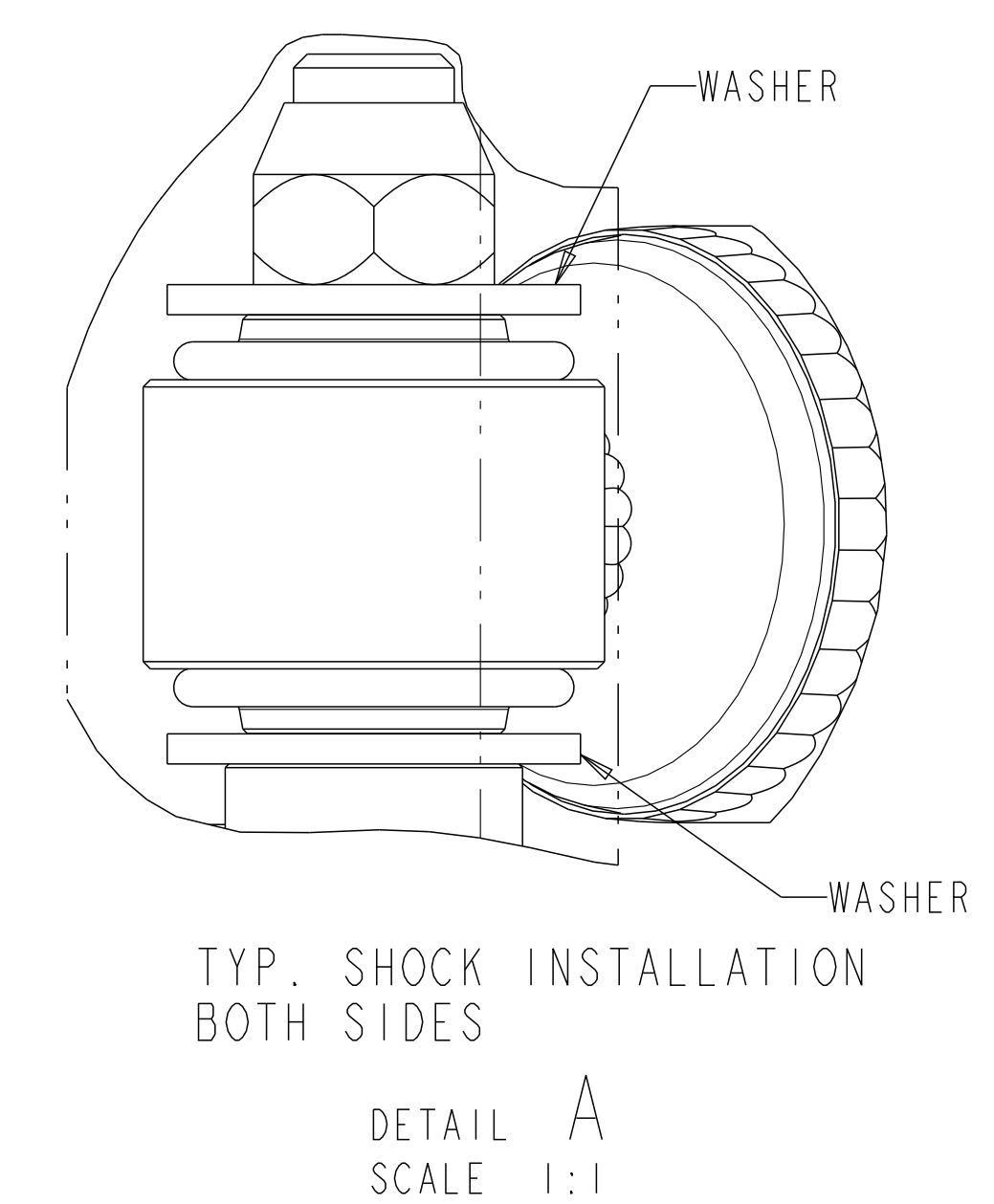
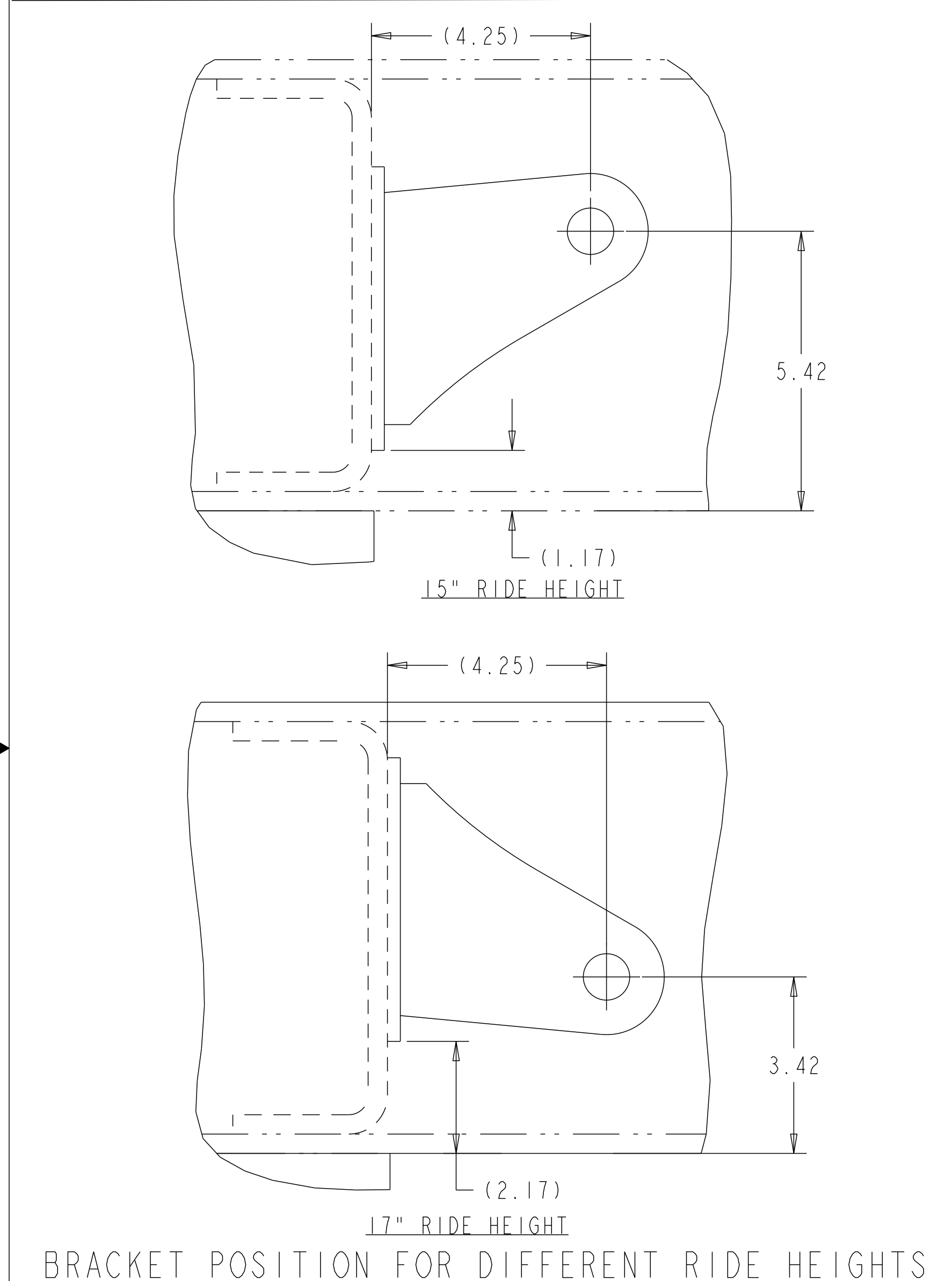


SIM. PARTS 5-66733E_01			
REVISIONS			
A	RELEASED 5-66733J_01 FOR PRODUCTION.	122507 14-NOV-13	KHK VMR
B	1-UPDATED VIEW TO REMOVE SECTION "C-C" AND ADDED TOP VIEW. 2-UPDATED NOTE.	ECN-132874 27-MAY-16	OL SD
C	UPDATED RHCV REPRESENTATION	ECN-165357 30-JUL-20	EN SD

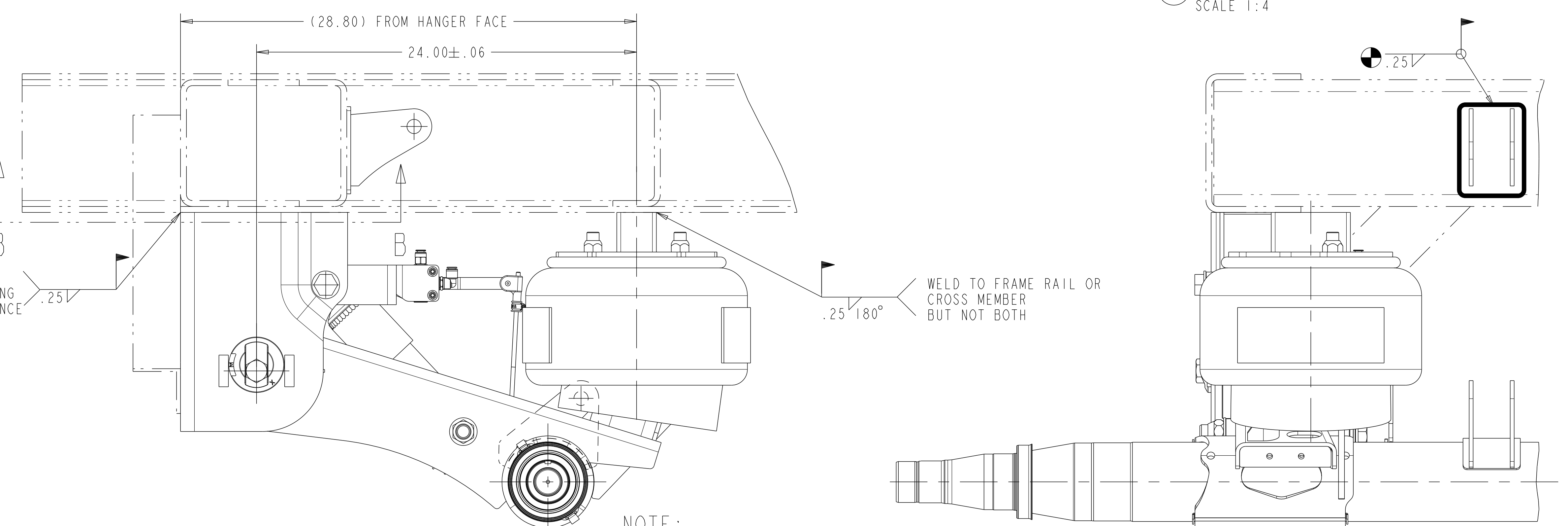


CAD FILES		
NAME	TYPE	
5-66733J C.10	DRAWING	
5-66733J C.7	MODEL	



RECOMMENDED KNEE BRACING AND WELDING

● WELD ON INSIDE OF HOLE TO PRODUCE PLUG WELD AS SHOWN



NOTE:

PROPER VEHICLE FRAME DESIGN IN THE AREA OF SUSPENSION ATTACHMENT IS THE RESPONSIBILITY OF THE INSTALLER.

ALL WELDING TO COMPLY WITH AWS STANDARDS 70 KSI MIN. WELD WIRE TENSILE STRENGTH.

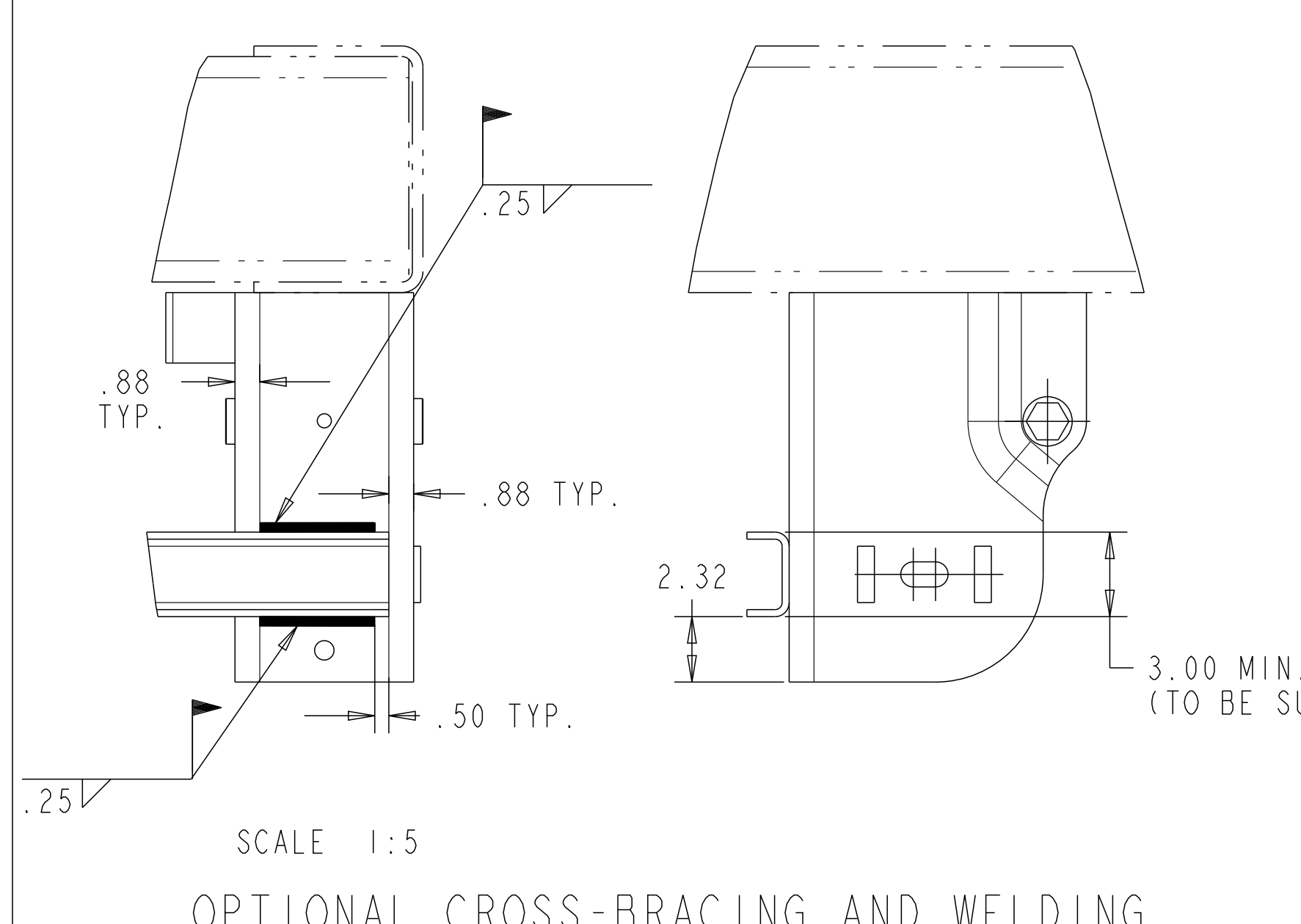
NO WELDING OR DRILLING ALLOWED ON TRAILING ARMS NO WELD WITHIN .25" OF FRAME BRACKET TOOLING HOLES

FOR GENERAL ARRANGEMENT INFORMATION SEE DRAWING 5-66734AA\_01

● INSTALLER NEEDS TO ADD STRUCTURE AS REQUIRED TO FULLY SUPPORT AND WELD THE UPPER STRAP BRACKET

REFER TO SHOP CHART 4-60559\_36 FOR TORQUE INFORMATION

FRAME WELDMENT LAYOUT FOR MTA25T WITH STRAP BRACKETS FOR 15" AND 17" RIDE HEIGHTS



APPLY SPECIFIED MERITOR MARKINGS PER DRAFTING ENGINEERING STANDARDS D-004	THIS PRINT IS LOANED ON A CONFIDENTIAL BASIS SUBJECT TO RETURN UPON DEMAND BY MERITOR AND NOTHING HEREON MAY BE REPRODUCED, USED OR DISCLOSED IN WHOLE OR IN PART WITHOUT THE PRIOR WRITTEN PERMISSION OF MERITOR.	MATERIAL	PROCESS	SEE BILL OF MATERIAL FOR SPECIFIC INDIVIDUAL MODEL INFORMATION				DRAWING SIZE	SCALE	DESIGN CONTROL GROUP	PART NO.
				PROJ. ENG.	MATERIAL	SPECIAL	DRAWN BY				
					V.M.R.	K.H.K.	E	1:4	W W TRAILER PRODUCTS	122507	
					18-OCT-13	18-OCT-13				5-66733J-01	
										4-60559_36	
										11707	
										PAGE 1 OF 1	

DO NOT CHANGE MANUALLY